

Expert Advisor Installation Instructions

This file will explain how to install the EA (EX4) file into the Meta Trader 4 platform and set it up for automated trading.

1. Start by making sure your Meta Trader 4 platform is closed. If you have the platform running the install will not take affect till you close and restart the platform.

2. Click on the "my computer" icon on your desktop.



3. Then click on "local disk (c)"

Files Stored on This Computer



Shared Documents



Steve Rundhammer's Documents

Hard Disk Drives



Local Disk (C:)



HP_RECOVERY (D:)

Devices with Removable Storage



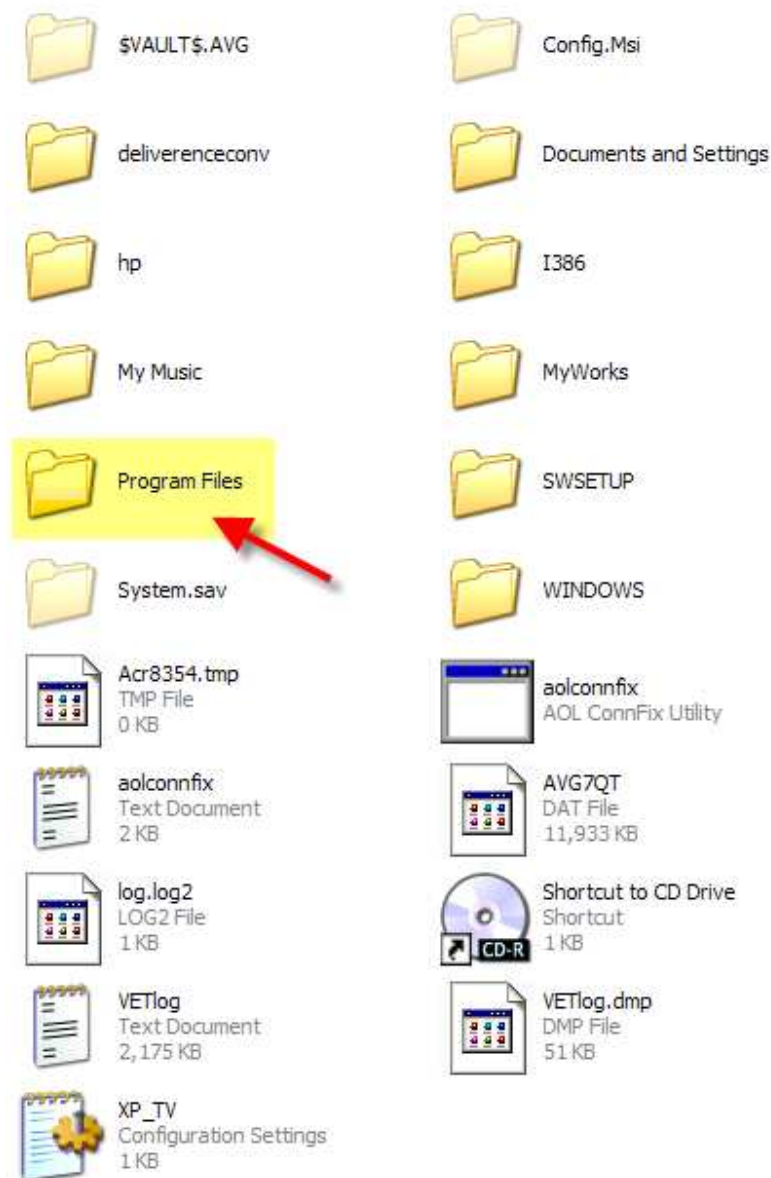
DVD-RAM Drive (E:)

Other

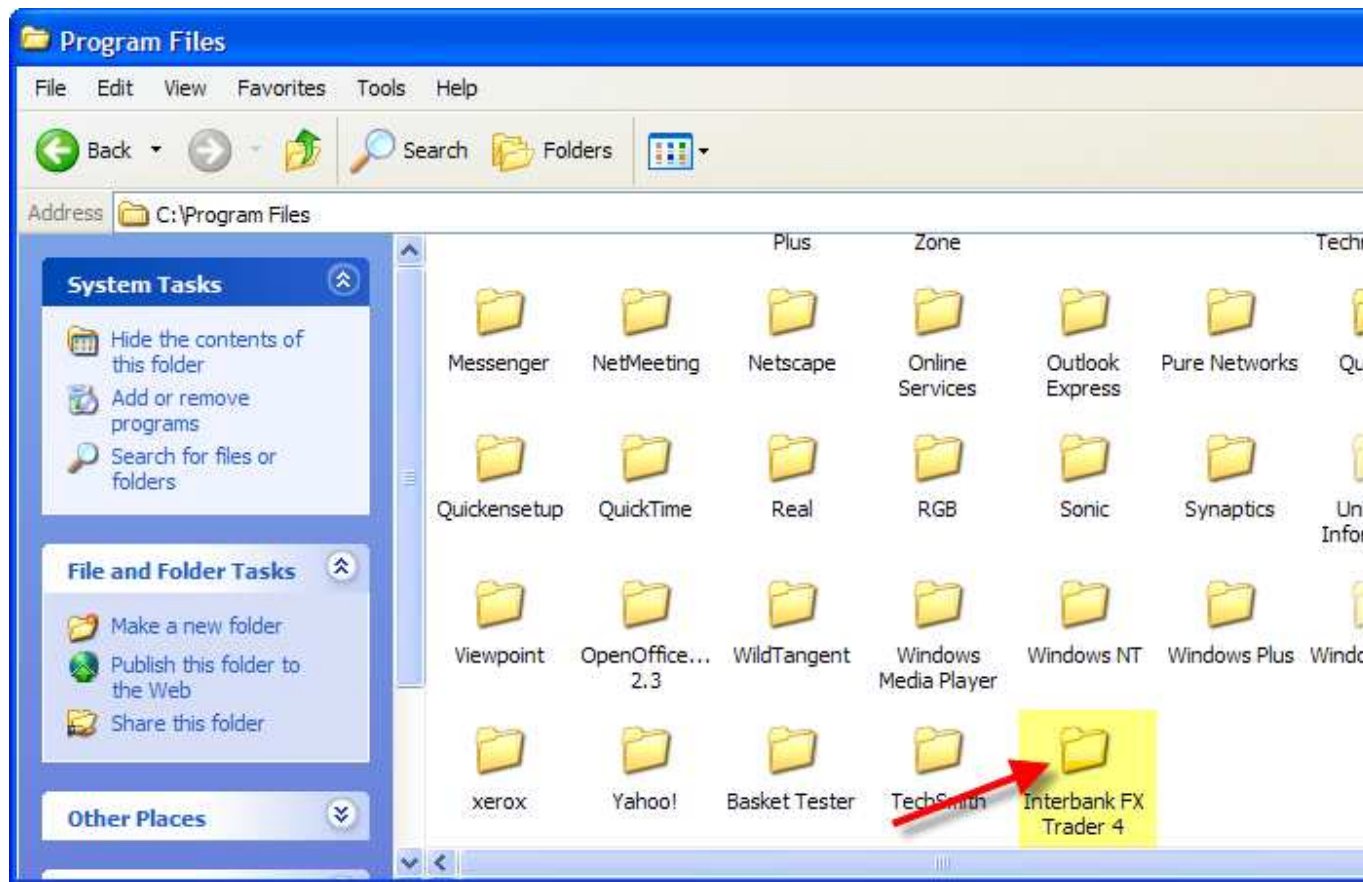


My Bluetooth Places

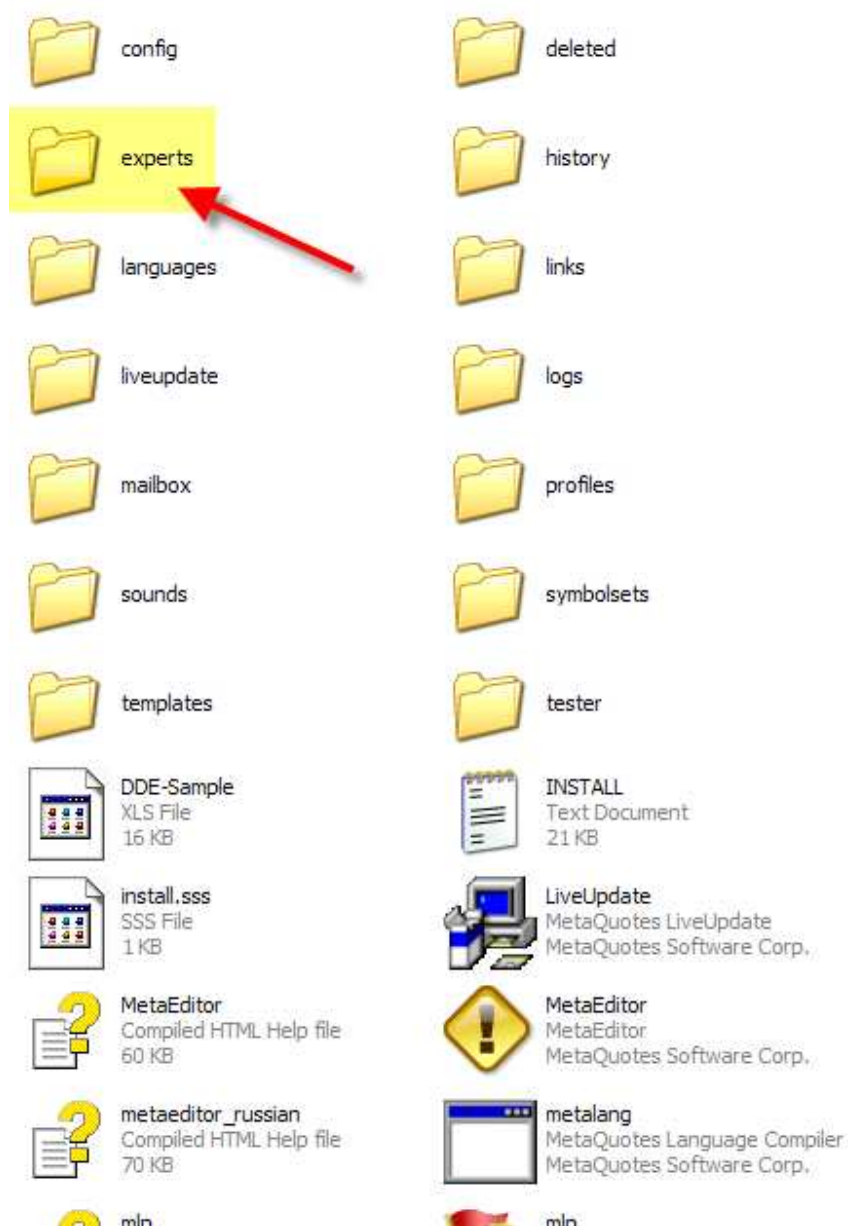
4. Then click on the folder "program files"



5. Next click on the folder that you saved Meta Trader 4 into



6. Next, click on the experts file folder.

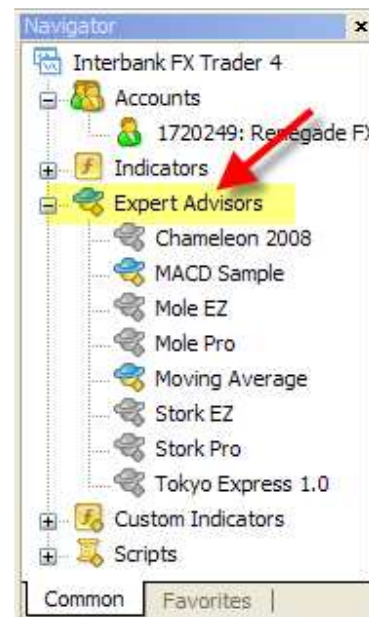


7. Now you will need to copy and paste the EX4 file you received from us into this folder. When you have finished you will see it in the list. Look for it. Here is a picture of our EA's in this folder.

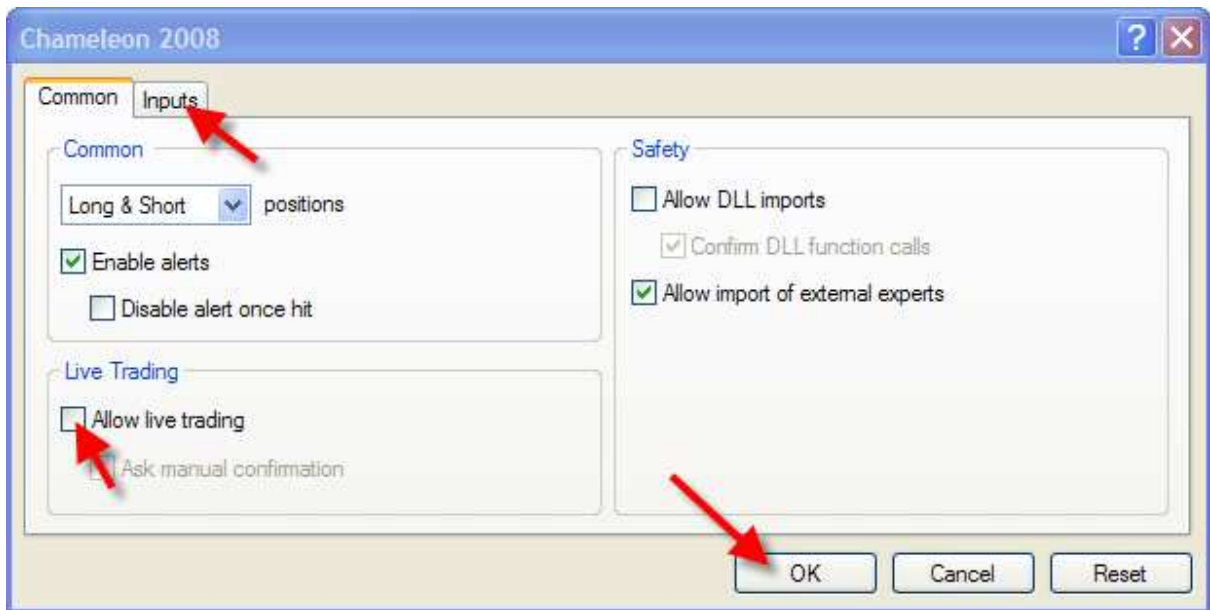


8. Now close the window and open your Meta Trader 4 platform. Look in the "Navigator" window for the name of our EA that you purchased. If it is not there, shut down the platform and go through the install

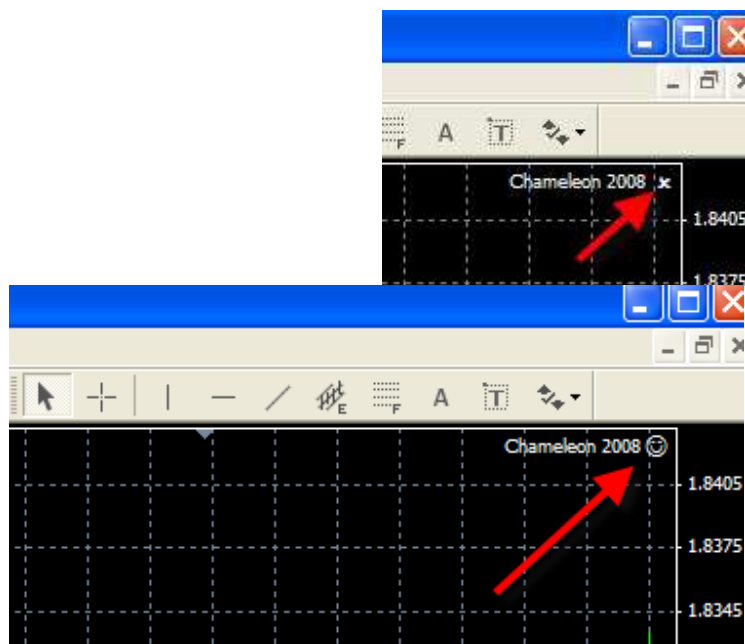
process again. If it is there you are ready to proceed.



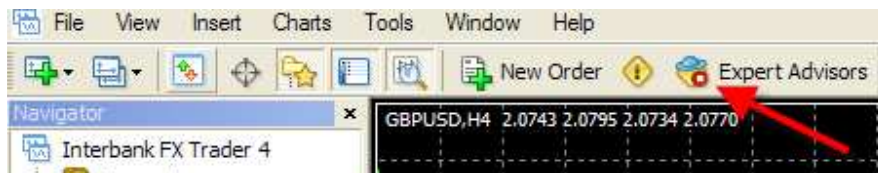
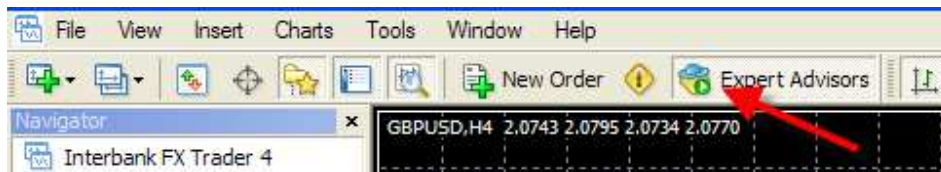
9. Make sure you have the chart of the currency pair you want the EA to trade open. Then, to run the EA click on the name of the EA you want to run. The settings window will open. Like below. To run the EA you will need to click on the inputs tab where you will enter your settings for the EA. Then when you are done with the inputs return to the window shown below and check the "Allow live trading" box and click OK. The inputs are discussed in the individual EA's instruction files you received in your attachment and in the EA's recommended settings file you received.



10. After you click OK above you will see the EA attached to the chart. Look in the upper right hand corner of the chart. You will see one of two things. They are shown below.



You will see either a smiley face or an X. If you see a smiley face everthing is fine and the EA will start trading. If you see an X then one of two things need to be corrected. Check to see if the "Allow live trading" box was checked in the step above. The other thing to look at is the Experts on off switch. shown below.



When the expert is turned on the tab has a green circle. When it is turned off the circle is red. If your computer shuts down the EA will be disabled and you will need to turn it back on. If you want to remove the EA from the chart to discontinue trading right click the EA on the chart.

11. That completes the installation and setup of the EA. Now the EA will trade automatically for you. The settings the EA uses to trade by are discussed in the individual EA's instruction file.